

Toyota Peugeot Citroen Automobile (TPCA) Prague

Schedule: 2007.12.17~12.21

2007.12.17 Chubu ⇒Paris/ CDG ⇒Prague

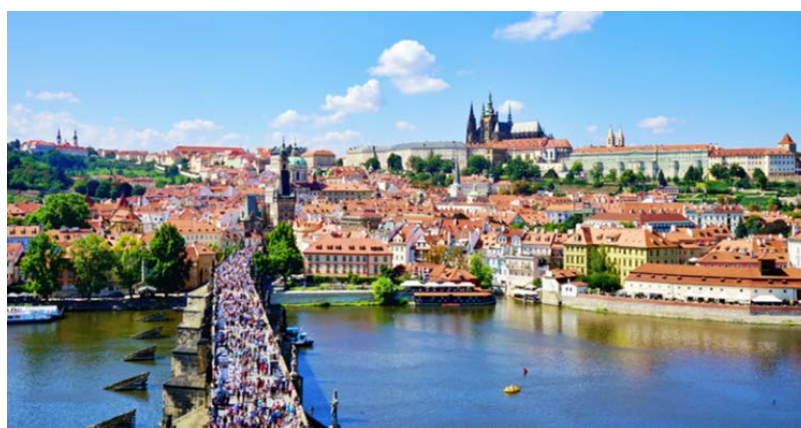
2007.12.18 09:00-16:00 visit Toyota Peugeot Citroen Automobile

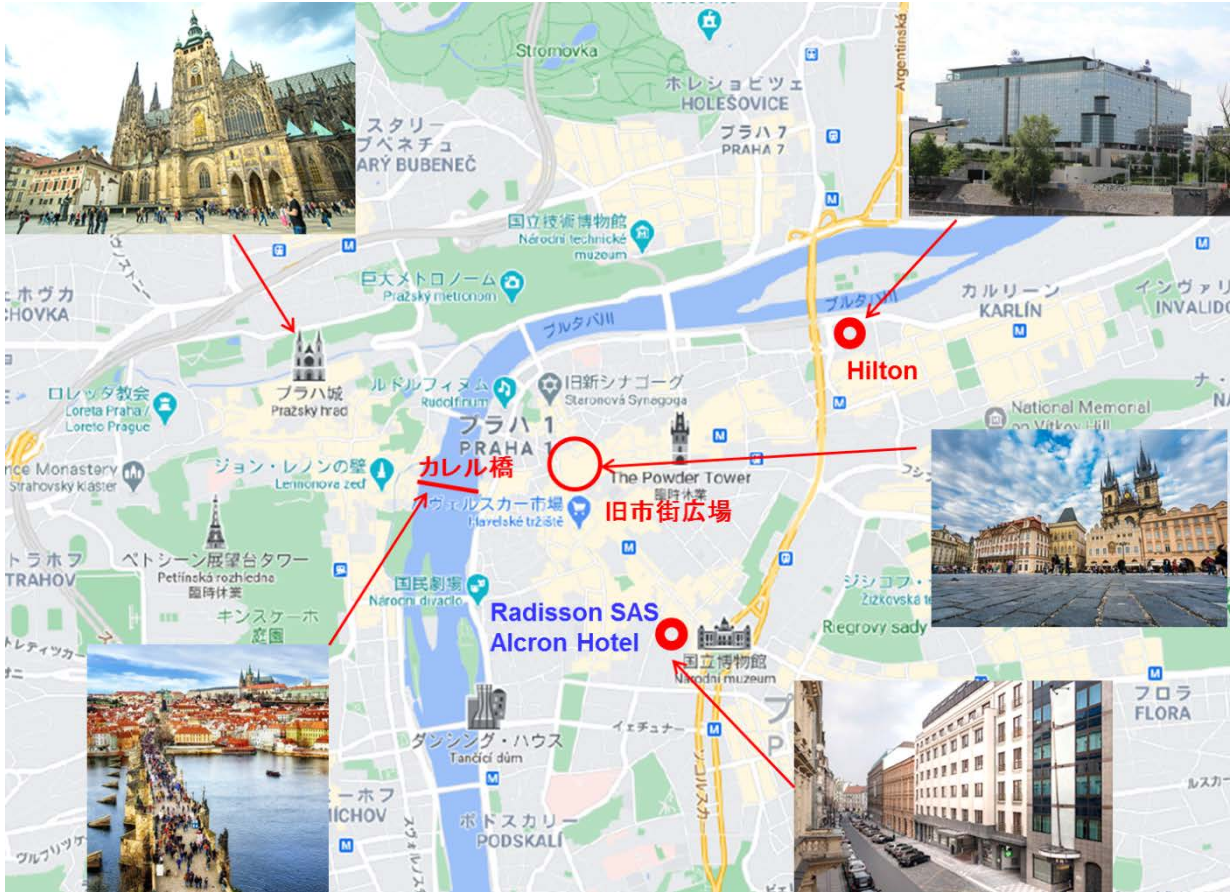
2007.12.18 Prague ⇒Dusseldorf

2007.12.19 09:00-17:00 Meeting with Toyota Tsusho ID Systems

2007.12.20 Dusseldorf ⇒Paris/ CDG ⇒Chubu (+1)

2007年12月18日にプラハのTPCAを先月に引き続き訪問した。先月はJAIFの会議後に訪問したが、RFIDの使用現場を十分視察できなかった。トヨタ経由でミーティングを要請し、RFIDのプレゼンと現場視察を行った。





Radisson SAS Alcron Hotel

My Prague Residence

Radisson SAS
Alcron Hotel
Štěpánská 40
CZ-11000 Prague 1
Czech Republic

Tel: +420 222 820 000
Fax: +420 222 820 100
prague.radissonsas.com



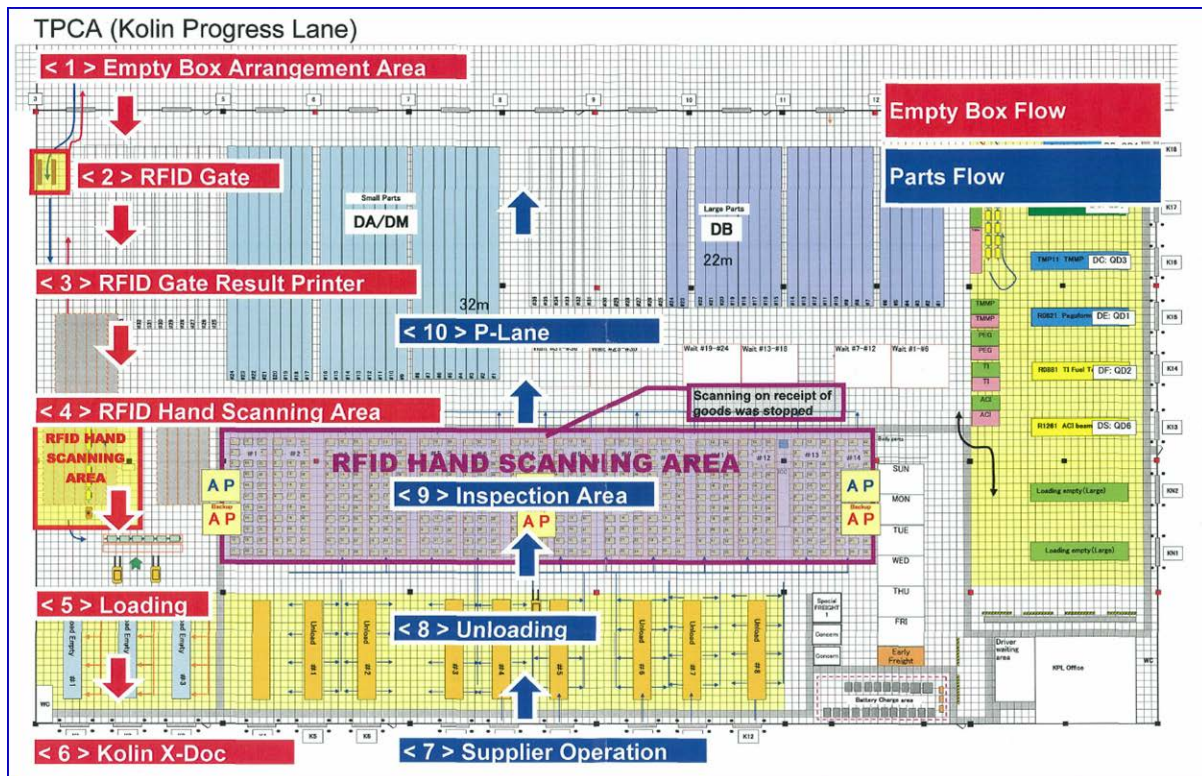
Radisson SAS



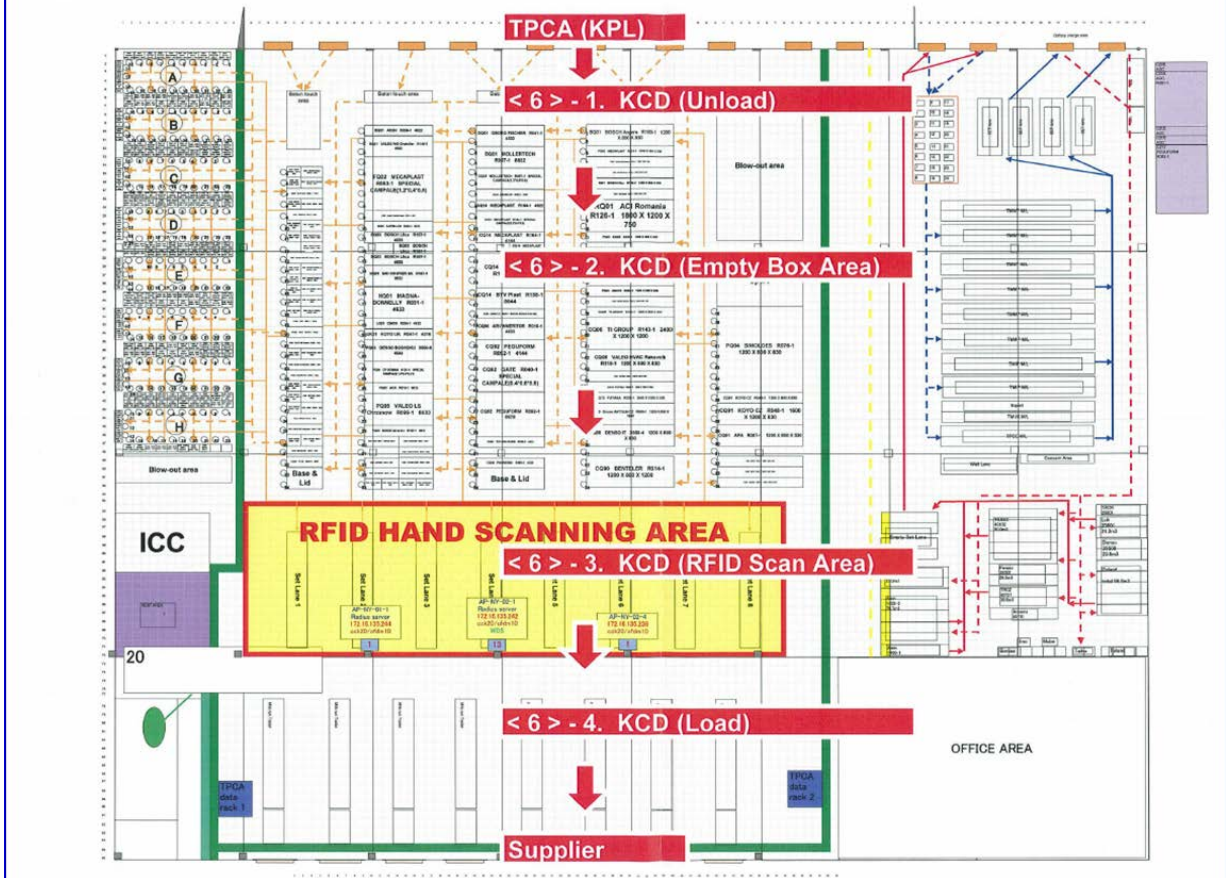


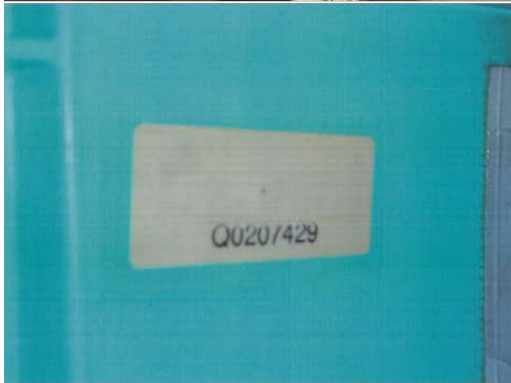
Toyota Peugeot Citroen
Automobile Czech

Toyota Motor Manufacturing
Czech Republic (TMMCZ)



Kolin Cross Dock





Results

	1	2	3	4	5	
Supplier	R062-1	R062-1	R066-1	R091-1	R093-1	Name Date: 15/11/2007 Time: 14:52:42 RFCE Error Detail: If Qty is less than info. If Qty is less than info.
Box Type	4322	4644	8644	4316	4316	
Quantity	31	8	4	47	16	
Supplier	R163-1					
Box Type	4666					
Quantity	4					

Buttons: OK, WARNING, NG

Type: Symbol MC 9090 with 5GHz WIFI band
 OS: MS Windows Mobile 5
 Scanner: JIS hand scanner (currently used type)



SUPPLIER R128-1 INTERPLASTICO	3060	ORDER NO - MRDS 2007 11 22 - 40	SERIAL # 164
PART # 75331-0H020-00	BOX QTY 18	DOCK DA	RANBAR SERIAL # 2113
EMBLEM HOOD		CITROEN UNIQUE	5686717
PICKER COURSE 5	DOLLY # A	PICKING SEQ. 34	DELIVERY COURSE 8
STORE ADDRESS P04 - 22		LINE ADDRESS TRS - 1	

SUPPLIER INTERPLASTICO Simold	29	MANIFEST NUMBER 2007 11 2102 -00
R128-1	TPCA	PART NUMBER 75303-0H010-00
PACK TYPE 4622	*A155738300753030H01000008*	PART DESCRIPTION EMBLEM SUB-ASSY HOOD
SUPPLIER BARCODE		QUANTITY 12
SUPPLIER DATA	E P04 - 22	DOCK DA
	3058	

1 / 31

The Report of Project for RFID Pilot Trial in Malaysia, Singapore, Thailand and Japan in 2005

22nd march, 2006

Japan Automobile Parts Industry Association

JAPIA

2 / 31

1-1 Purpose

Purpose
Using RFID (Radio Frequency Identification), we are aiming for worldwide integration as follows in Asia.
 "Manufacturing and Sales",
 "Commercial and Physical Distribution",
 "Critical Systems".
 Expansion of trade, mutual development and prosperity of the whole East Asia

Strategy (Tentative)

1. Achieve the Supply Chain management with RFID, in order to upgrade and make more efficient the distribution and logistics of companies in East Asian countries.
2. Achieve traceability using RFID, in order to ensure security and peace of mind in trading
3. Build a shared platform for distribution, with RFID information, and which complies with ISO international standards.

JAPIA

3 / 31

1-2 Schedule

Items	'05/9	10	11	12	'06/1	2	3
Planning	[Timeline bar]						
System Development	[Timeline bar]						
License			SIN: 10/31(924.0MHz) mY: 11/18(919.5MHz)		TH: 1/24(923.648MHz) JP: 12/0(952.994MHz)		
Setting and Education			SIN: 11/24~30 mY: 12/2~9 Education in mY: 12/12~16 TH: 12/19~28		JP: 1/27~30		
Preparing							
Trial			SIN: 1/3~ mY: 1/3~ TH: 1/25~				JP
Reporting							

JAPIA

4 / 31

1-3 Project team in Japan

<Organization>

Representative : Japan Automobile Parts Industry Association
 Consulting : NTT Communications
 Participating : DENSO and group companies

JAPIA

5 / 31

1-4 Location and Function

Std Standard Type: 7 **Crs** Cross Type: 2 **Hdy** Handy Type: 1

Malaysia (mY)
 DNmY (Parts Supplier)
 Domestic Returnable Container (KHL cases)
 Kein Hing (Supplier) (warehouse)
 Kajang Shah Alam (warehouse)
 Education


Singapore (SIN)
 Borneo motors (Customer)
 NYK Tuas (warehouse)


Thailand (TH)
 DTEC (Export C)
 DNTH
 Bangpa kong

Japan (JP)
 Denso Trade Center
 Parts Supplier
 Worldwide Returnable Container (C3, C4 cases)
 Samrong


JAPIA





 hotel nikko düsseldorf



nikko hotels international


 hotel nikko düsseldorf

Immermannstraße 41 · D - 40210 Düsseldorf
 Telefon +49 (0)211-8 34-0 · Telefax +49 (0)211-16 17 16
 E-Mail: info@nikko-hotel.de
 Internet: www.nikko-hotel.de



Nikko Chain Code: NK

Apollo / Galileo	26219
SABRE / ACCESS	1458
Worldspan	01458
System One	DUS001
Amadeus	DUS001

nikko hotels international



Toyota Tsusho ID Systems GmbH